

IP Communications is Here to Stay – What Now?

Simon Gwatkin

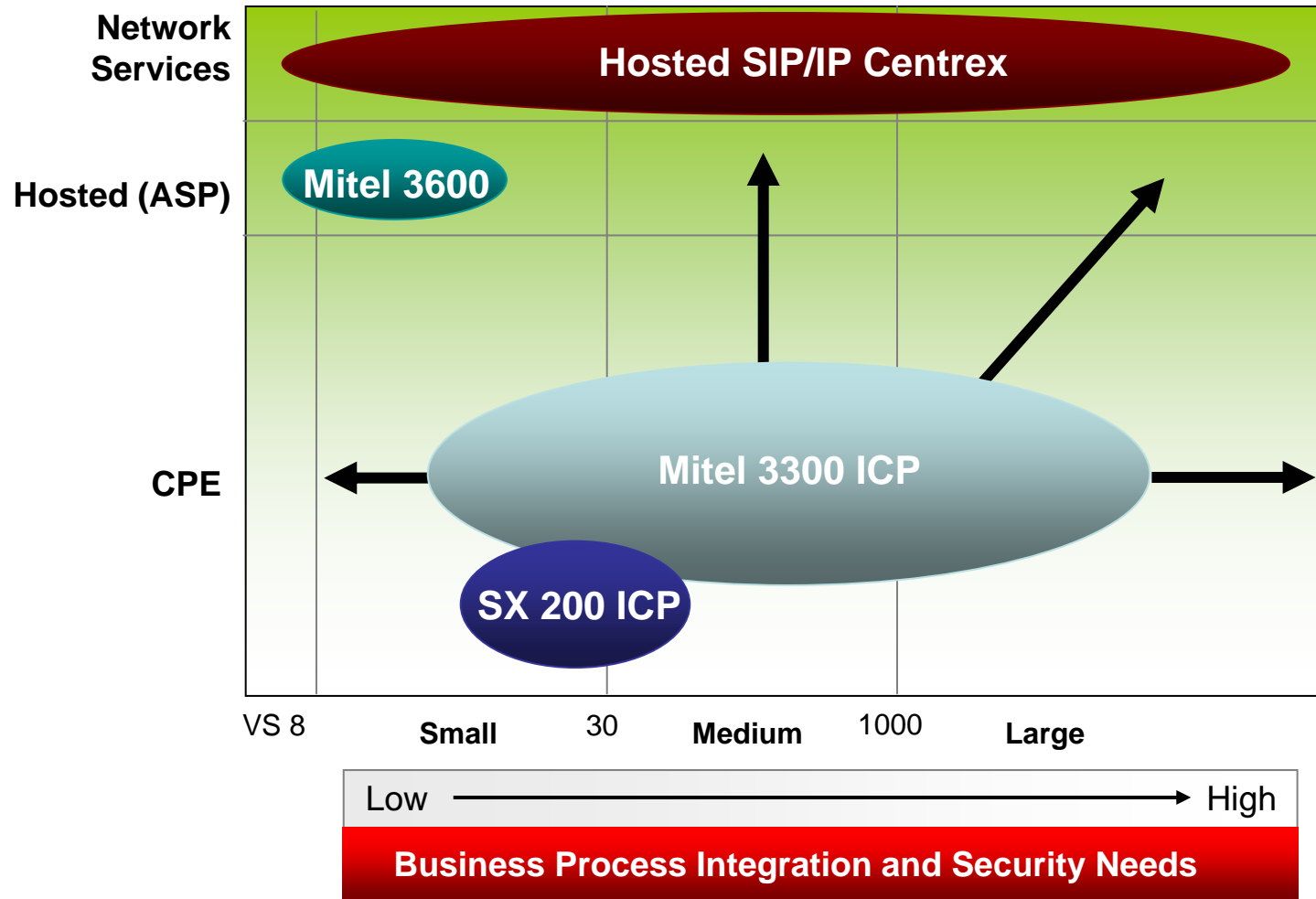
Vice President, Strategic Marketing

Mitel

Company Overview

- **Mitel is a leading provider of Unified Communications solutions**
- **Focused on the opportunity provided by the global transition to broadband communications**
- **One of the broadest portfolios of unified communications platforms, applications and desktop devices**
- **Over 25 years experience in business communications**
- **Over 230,000 systems delivered servicing over 22,000,000 users in 90 countries**
 - **Over 2,600,000 IP lines shipped**
- **~1,650 employees in over 40 locations worldwide**

Meeting the Customer Need



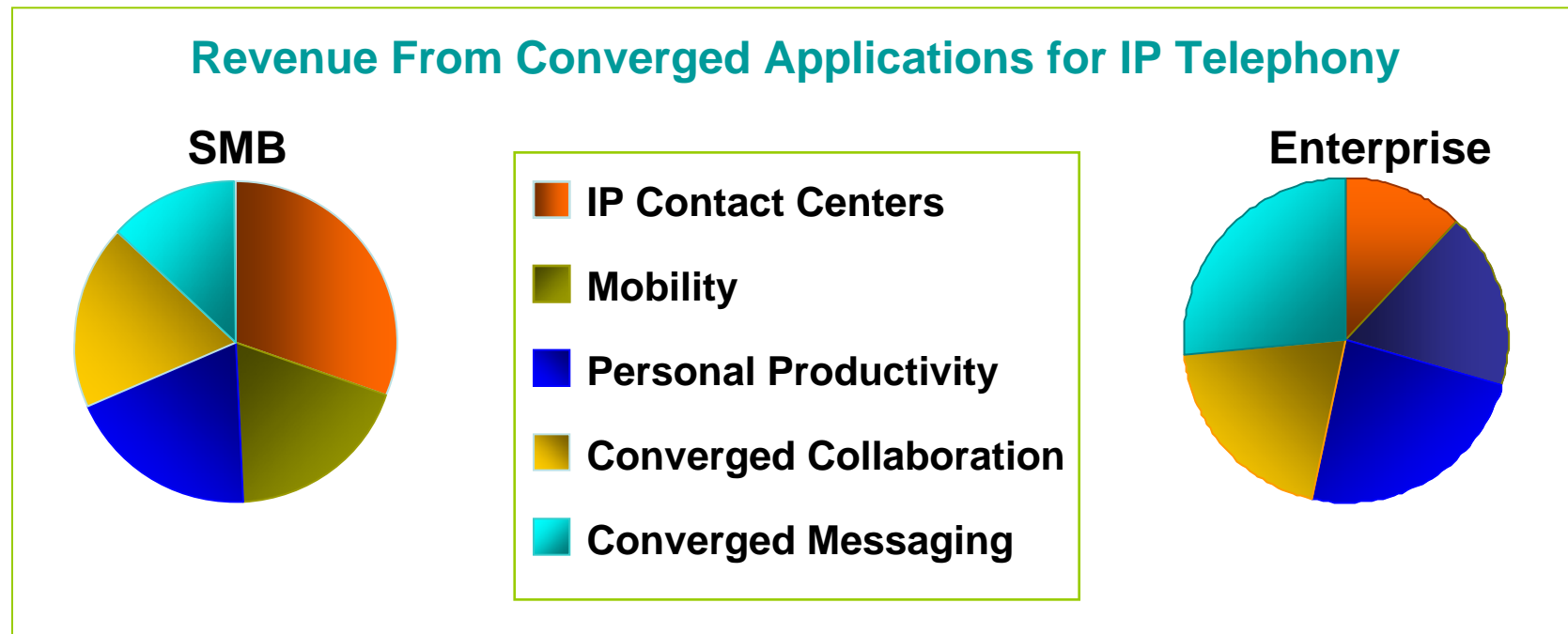
The Initial Stages Of A Fundamental Transition



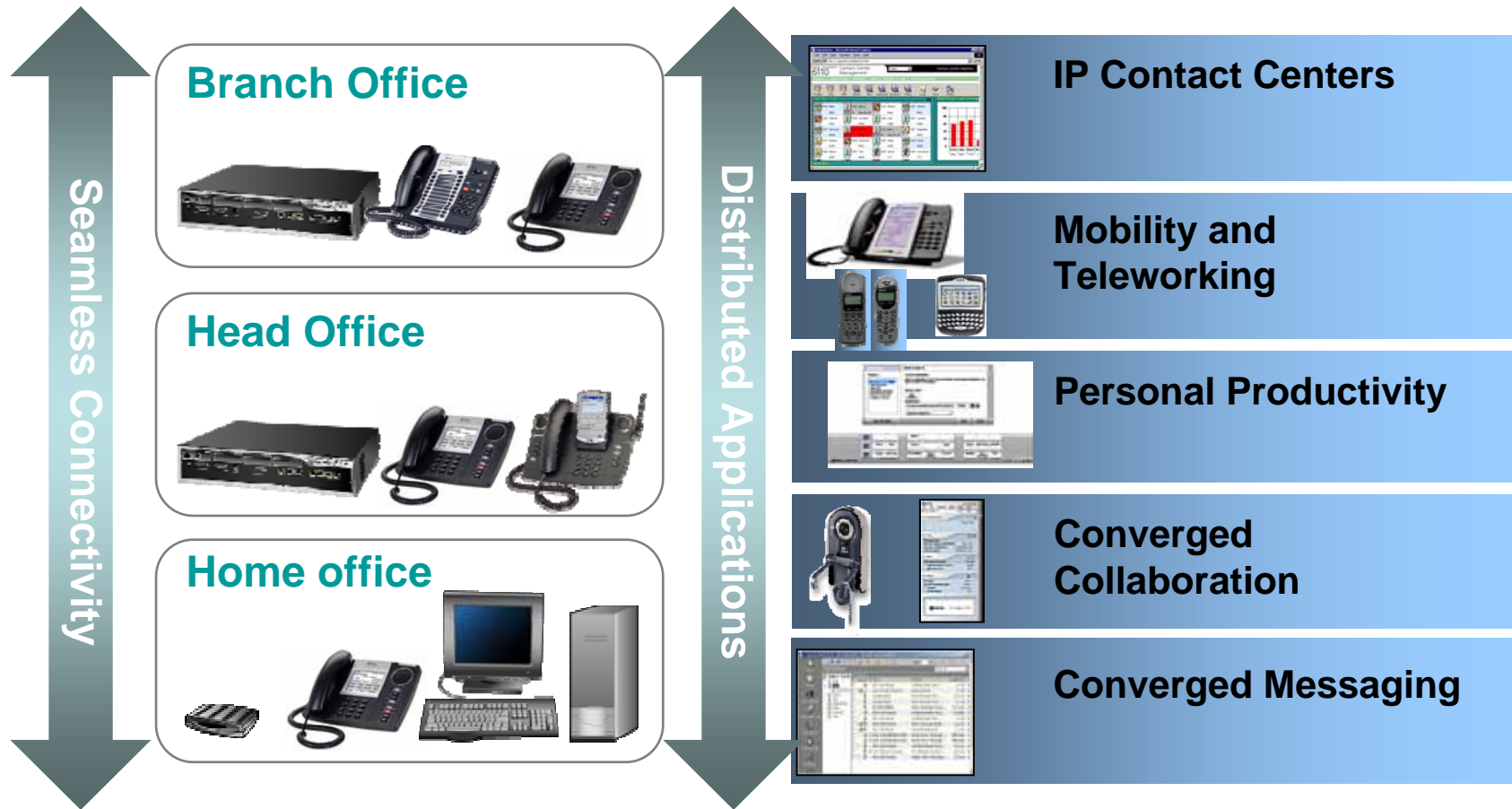
| Position of Voice | Voice as a System | Voice as an Application | Voice as a Feature |
|-----------------------------------------|----------------------------|------------------------------------------------------------|-------------------------------------------------------------------------------------------|
| Decision Focus | Site-Centric | Network and Enterprise-Centric | Enterprise Community / User-Centric |
| System Architecture | Central Processor | Proprietary Servers and Appliances | Open Servers, SOAs, Communication and Business Applications w/Integrated Voice Features |
| Service Focus | Maintenance | Managed and Hosted Services | Applications / Solution Design and Integration |
| Key End User Decision Attributes | Reliability, Functionality | Business Process Integration, User Productivity, ROI / TCO | Business Process Optimization, User Experience, Incremental Business Revenue and Benefits |
| Key Business Model Metrics | Lines / Ports Shipped | Devices / Licenses Shipped | Application / Feature User Attach Rates, Annuity Revenues |

Converged Applications

“Over half of all IPT implementers rated their preferred IPT Vendor as their preferred source for converged applications”
InfoTech

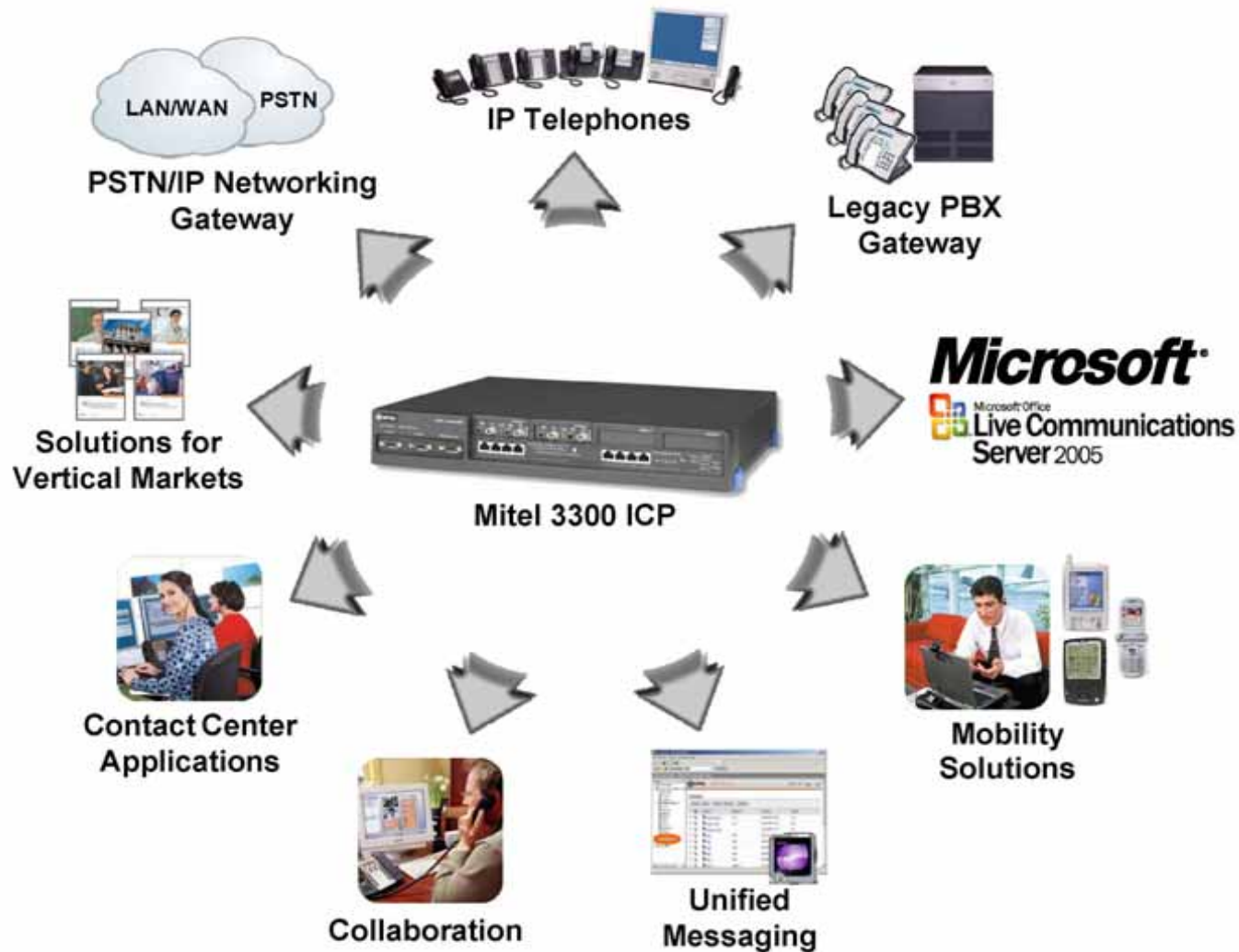


Networked Business



Enabling Communication "In the Moment"

Mitel 3300 Applications & Services Gateway



Communities of Interest

- **Intra-Company**
 - Between people in your business
 - Not just about hierarchy, applies to people with the same task or skill set, eg Loan Officers, Branch Managers etc
- **Inter-Company**
 - Federation
 - Seamless interaction across broad geographies
 - Creating business leverage in a “Flat World”



**Timely & cost effective
implementation leverages existing
communications infrastructure**

Mitel Live Business Gateway

Mitel Live Business Gateway

Mitel NuPoint Messenger

| | Caller ID | Mailbox | Received |
|--------------------------|--------------|---------|------------------|
| <input type="checkbox"/> | Don Smith | 1005 | 01/06/2006 14:33 |
| <input type="checkbox"/> | Don Smith | 1005 | 21/06/2006 15:01 |
| <input type="checkbox"/> | Paul Butcher | 1009 | 21/06/2006 15:02 |

Presence awareness, VM settings, user configurable call flows

Mitel Quick Conference

Bridge: **2556 (Stephen Beamish Sales Rally)**
 Started: 15:40:46
 Duration: 0 hr 01 min
 Participants: 3
 Access: Open

| Participant | Audio Level | In Conference |
|------------------------------|-------------|---------------|
| X 1005 D.Smith | | 15:41:28 |
| X 1004 S.Skellon [Moderator] | | 15:40:54 |
| X 1009 P.Butcher | | 15:41:32 |

SIP based audio conferencing, rich conference audit and recording tools

Mitel Mobile Extension

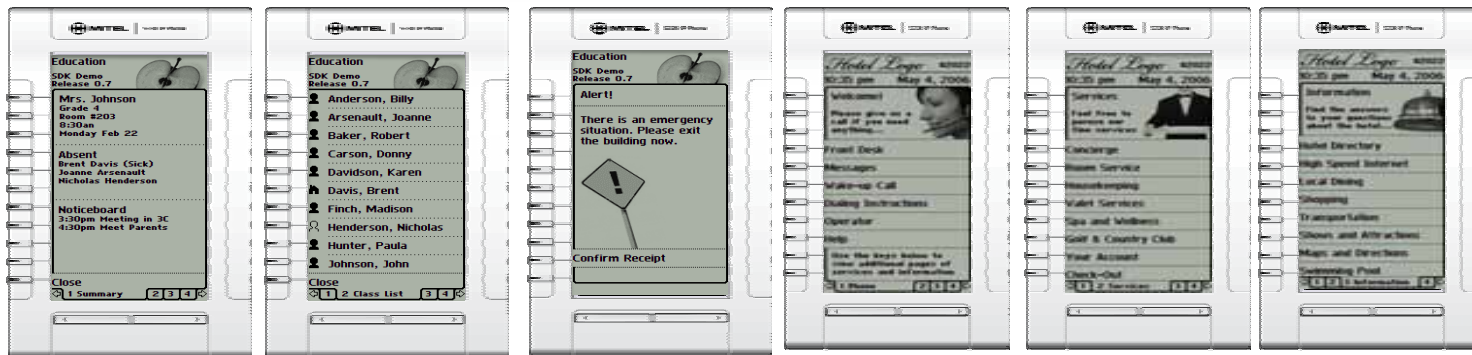
User Profile Settings

Desktop Extension: 1005
 New Password:
 Confirm Password:
 Mobile Twinning:
 Twin Number: 212-564-2211

One number access coupled with presence awareness and seamless transfer abilities

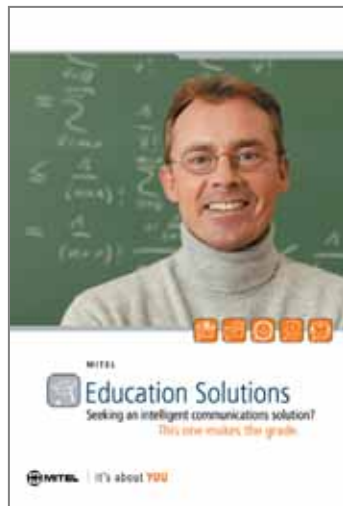
It is about *Unifying Communications*

Desktop Leadership



Business Process Improvement

- **Save Money**
- **Operational Efficiency - Change The Way People Work**
- **Increase Customer Loyalty, Satisfaction and Retention**
- **Drive Revenue**
- **Vertical Market Requirements**



Business Process Improvement

Convergence

Not just Infrastructure Convergence

But Convergence for the User



MITEL
Education Solutions
Seeking an intelligent communications solution?
This one makes the grade.
MITEL | It's about YOU




MITEL
Healthcare Solutions
Looking for the ideal communications solution?
This will make you feel better.
MITEL | It's about YOU



MITEL
Hospitality Solutions
Checking out communications solutions?
You'll find us very accommodating.
MITEL | It's about YOU



MITEL
Government Solutions
Searching for more effective ways to communicate?
This will get you talking.
MITEL | It's about YOU



MITEL
Retail Solutions
Shopping for an advanced communications solution?
It's in the bag.
MITEL | It's about YOU

Retail



MTEL
 **Retail Solutions**
Shopping for an advanced communications solution?
It's in the bag.

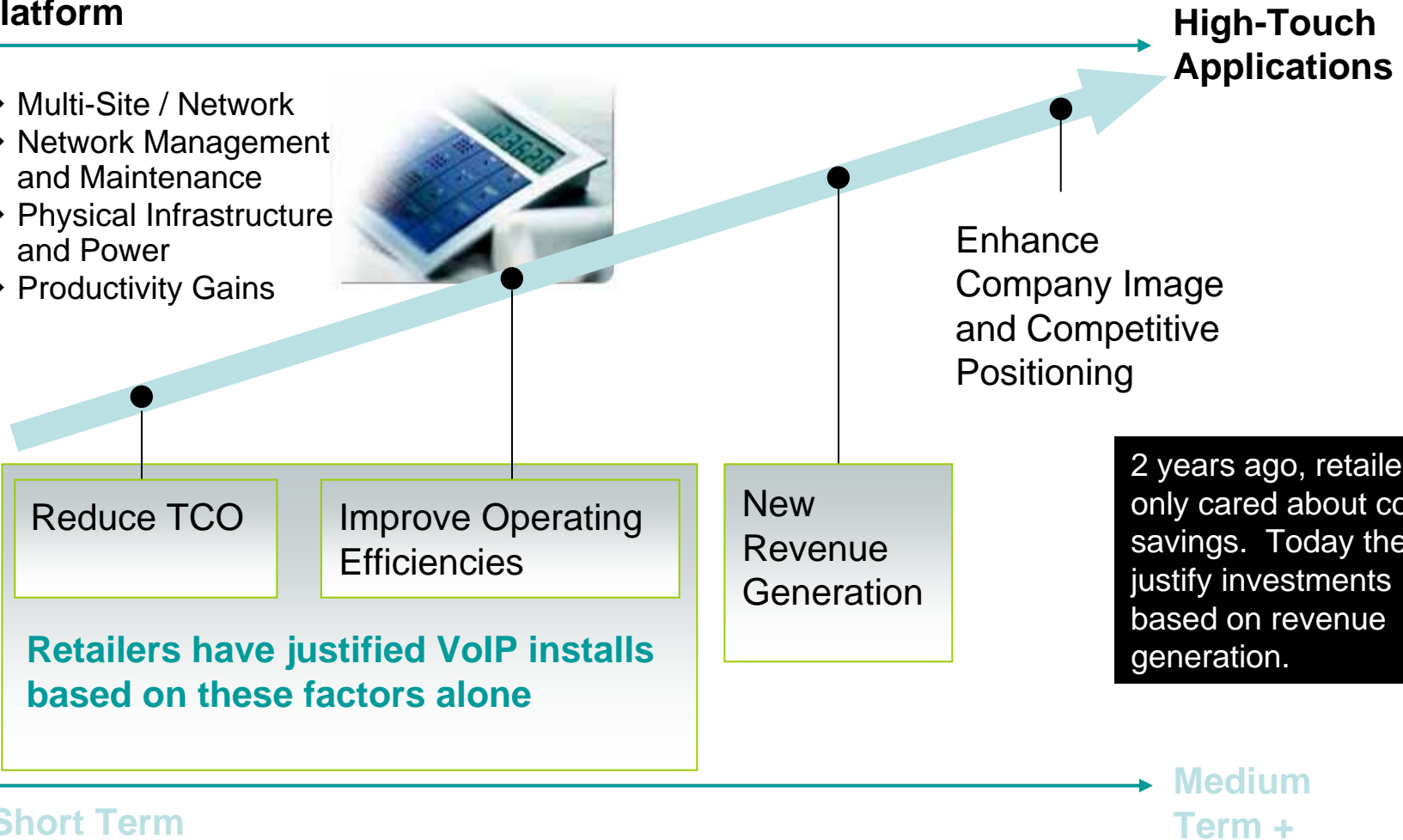
 | It's about YOU



The Evolution Process of VoIP as Experienced by Mitel's Retail Customers

Platform

- Multi-Site / Network
- Network Management and Maintenance
- Physical Infrastructure and Power
- Productivity Gains



Reduce TCO

Improve Operating Efficiencies

Retailers have justified VoIP installs based on these factors alone

New Revenue Generation

Enhance Company Image and Competitive Positioning

2 years ago, retailers only cared about cost savings. Today they justify investments based on revenue generation.

Short Term

Medium Term +

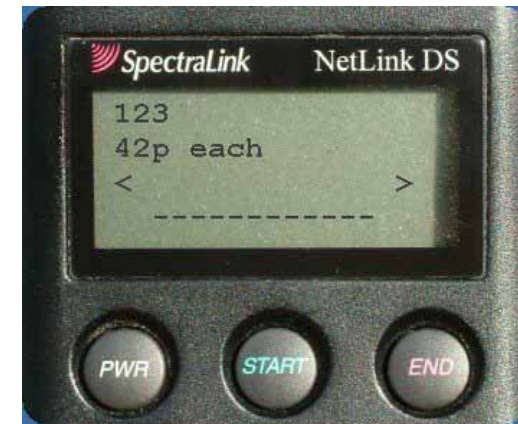
What does a Retail Store Include?



The Next Step in Customer Driven Stores

Inventory Links

- Enter the product code and press the start key
- Application interrogates the retail stores database and then displays the relevant information
 - ... in this instance the price...
 - ... or product quantity
- Press the right scroll key to display the product description.
- Pre defined alert text messages...
 - “Please meet customer at back door for pick up”
 - “Please authorise a transaction”
 - “Please provide change at cash position 8”
 - “Emergency door opened in zone 3”



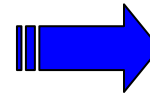
Price



Product Description

In-Store Customer Solution

ConnexAssist Pager



Retail POS Phone

- **Small footprint, low cost IP phone, developed for Retail POS**



Financial Solutions



MITEL
Financial Solutions
Investigating leading edge communications solutions?
Mitel is a safe investment.

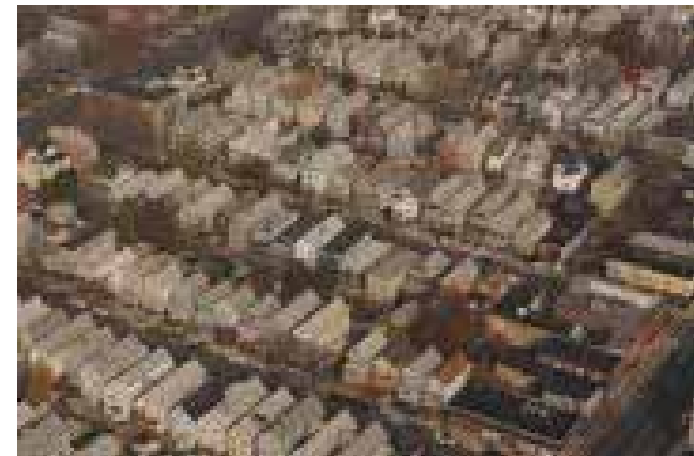
MITEL | It's about **YOU**

Mitel IP Trading Turret

- **Specialised developed to address the gap in the market for a light IP trading appliance**
 - Turret can operate in single or dual phone mode
 - No hook switch
 - Left / Right handset keys
 - common dial control
 - 44 physical buttons, of which 32 are Programmable Keys
 - 96 assignable keys
 - Rugged aluminum enclosure
 - Adjustable stand
 - Wall mountable



Business Continuity/ Disaster Recovery



Tomorrow's enterprise skyline
will look much different during an
emergency. Are you already there?

Business Continuity Teleworking

- **The same phone you use every day.**
- **Plug and Work into any network connection**
- **All the same features and controls you use every day**
- **Secure – 128 bit AES encrypted connection to the Teleworker server**
- **Scalable and resilient**



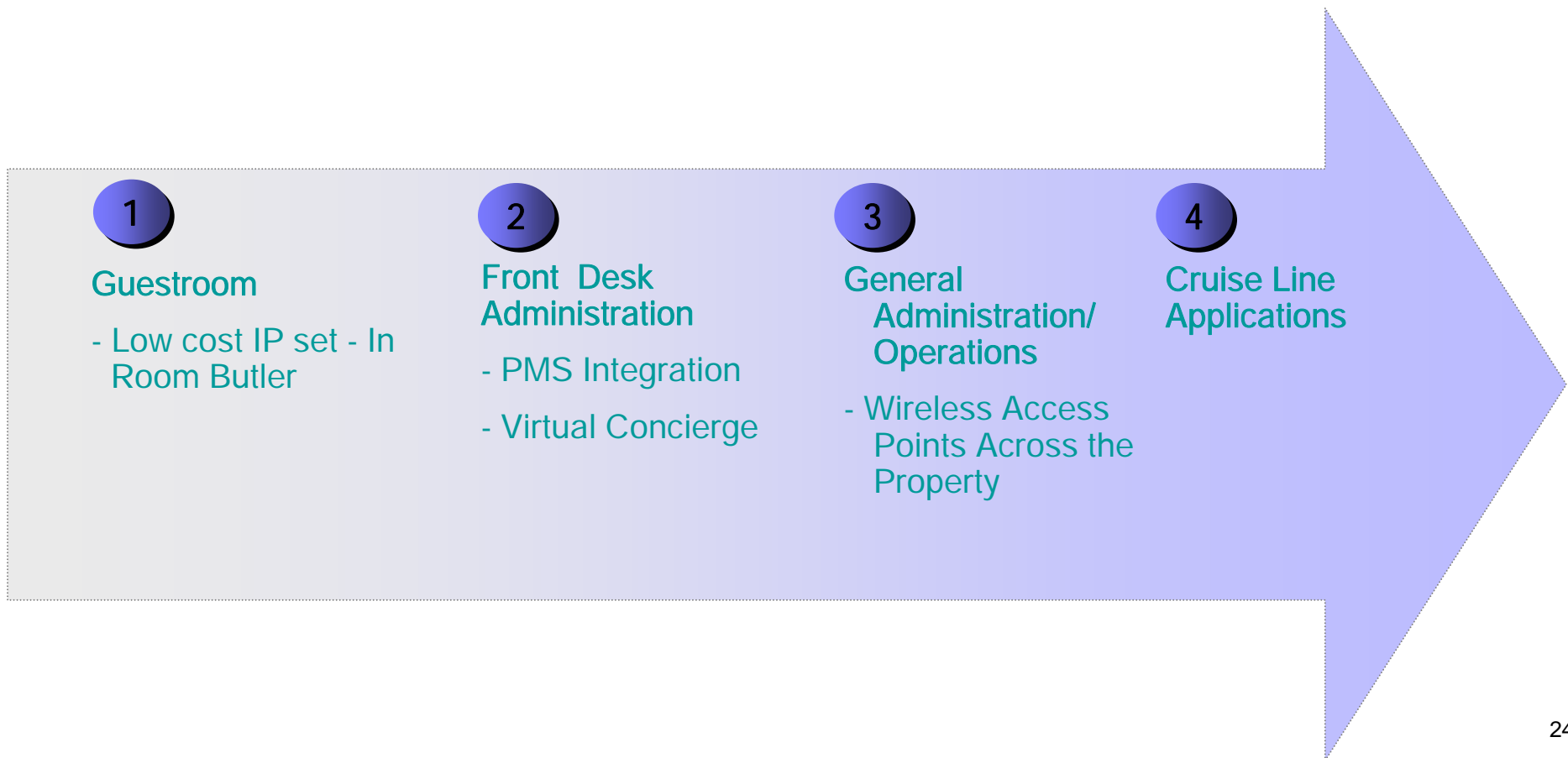
Hospitality



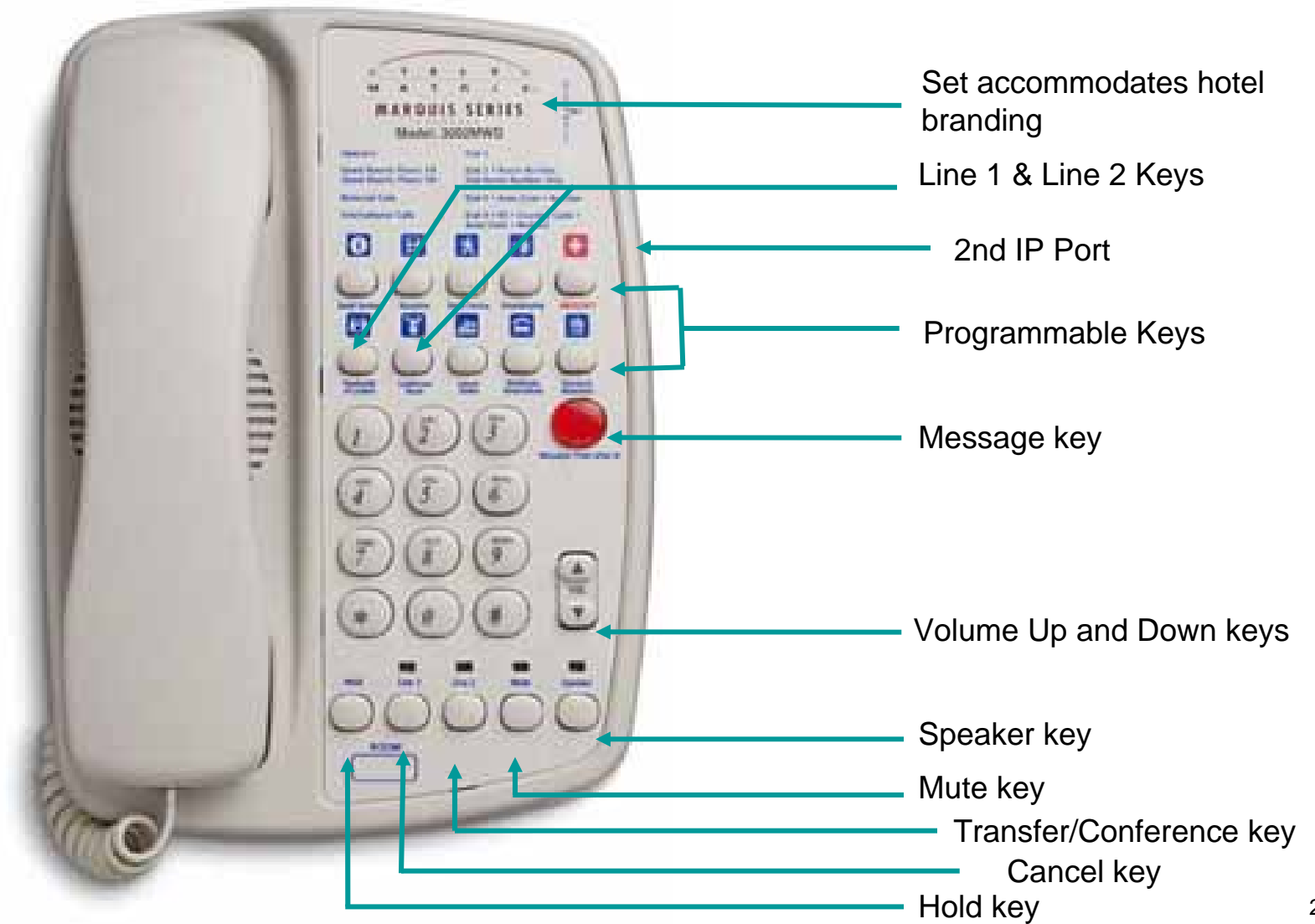
MITEL
Hospitality Solutions
Checking out communications solutions?
You'll find us very accommodating.

MITEL | It's about **YOU**

Hospitality Solutions



TeleMatrix 3000IP



Viewing Services Hotel Differently





GUEST

Dr. Steven Beamish
Resort member

Mitel Corporation
Sales Director
350 Legget Dr.
Kanata
Ontario
Canada
K2K 2W7

Office 613 592 2122
Mobile 613 765 8765
Fax 613 592 2122

3 New Voicemail

4 New Email

4 People Online

Wake-up Call 6:30 am

Twinning to Mobile

Sign-Out

Bienvenue

Velkommen

Bienvenuto

Willkommen

Welcome

Welcome

Dr. Steven Beamish

Work

Brookstreet Resort is located in the heart of Silicon Valley North—Ottawa's thriving high-tech community. This pre-eminent boutique hotel, business destination and resort features 16,000 square feet of elegant meeting space, as well as high-speed Internet access in every room.

Play

Brookstreet Resort overlooks cycling and jogging paths, cross-country ski trails, not to mention The Marshes Golf Club—a Robert Trent Jones II design, and one of the nation's finest golf destinations. For those who prefer to play indoors, the hotel's recreational facilities include two swimming pools, Au Naturel Wellness & Medical Spa and Flex Fitness Studio.

Getaway

For romantic and family retreats alike, Brookstreet Resort's 276 rooms—including 35 suites—are individually climate controlled and appointed with stunning and sophisticated original works by past and present students of Ottawa's Canterbury Arts High School.

Welcome to Brookstreet Resort. Travel to Ottawa, stay in style. Proud recipient of two prestigious four diamond awards

PREFERRED HOTEL

Brookstreet Resort

525 Legget Drive
Ottawa, Ontario
K2K 2W2
Canada
(613) 271-1800
1-888-826-2220
Fax: (613) 271-1850

Room Information

Executive Suite **#1103**
Two king beds
Non-smoking room
High floor
Near Elevator
Quiet Room



GUEST

Dr. Steven Beamish
Resort member

Mitel Corporation
Sales Director
350 Legget Dr.
Kanata
Ontario
Canada
K2K 2W7

Office 613 592 2122
Mobile 613 765 8765
Fax 613 592 2122

3 New Voicemail
4 New Email
4 People Online
Wake-up Call 6:30 am
Twinning to Mobile

Sign-Out

Servicios

Tjenester

Dienste
Servizi

Services

Services

Housekeeping Requests

Dr. Steven Beamish
Room #1103

Welcome to housekeeping requests. Use the controls below to review different services or use your mouse to access advanced controls.

Showing items **1- 8** of **14** items:

| | |
|--------------------------|--------------|
| Please Clean Room | Afternoon |
| Privacy Please | Enabled |
| Pick-up Tray | No Tray |
| Pick-up Laundry | No Laundry |
| New Towels | Everyday |
| Extra Pillows | None |
| Toiletries | Not Required |
| Shaving Kit | Not Required |
| More... | |

▼ Show Advanced Controls

PREFERRED HOTEL

Brookstreet Resort

525 Legget Drive
Ottawa, Ontario
K2K 2W2
Canada
(613) 271-1800
1-888-826-2220
Fax: (613) 271-1850

Room Information

Executive Suite **#1103**
Two king beds
Non-smoking room
High floor
Near Elevator
Quiet Room

Healthcare



MITEL
 **Healthcare Solutions**
Looking for the ideal communications solution?
This will make you feel better.

 MITEL | it's about **YOU**

Healthcare Solutions



* Partners TBD for items in gray

Education



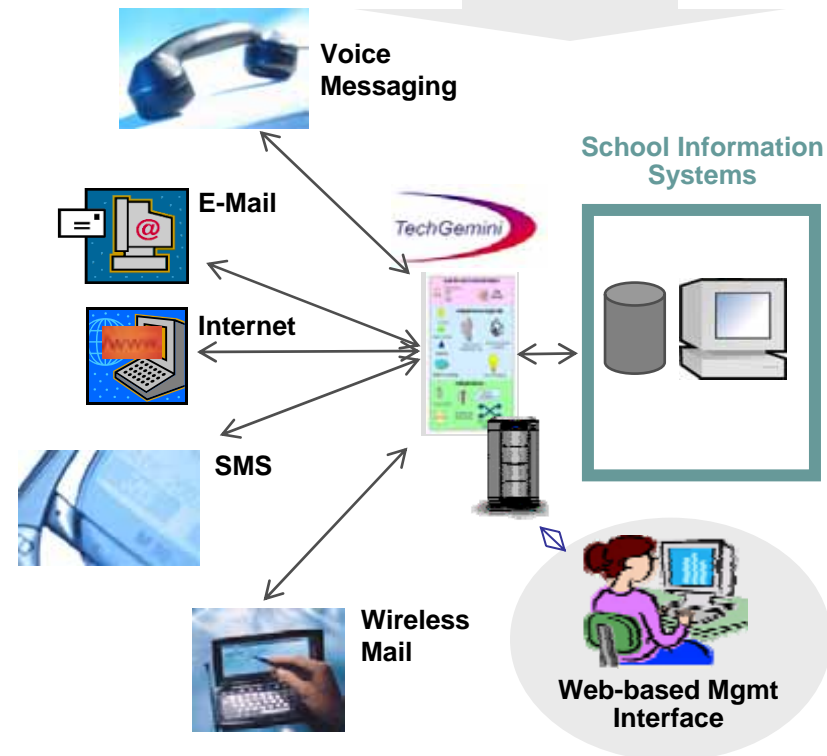
MITEL
 **Education Solutions**
Seeking an intelligent communications solution?
This one makes the grade.

 MITEL | It's about **YOU**

Education Solutions

- **SOS application**
- **Allows teachers to communicate with parents**
- **Multi-channel, multi-language notification solution**
- **Policy driven message delivery capabilities**

School Closings
Child Absenteeism
Health Alerts
Homework Assignments
Class Activities
Parent Teacher Reminders



Summary

- **IP Communications is here to stay!**
 - Proven ROI and lower TCO
- **It is not just about voice anymore**
- **Solutions for vertical markets requires a “best of breed” approach**
- **Integration with Businesses Processes is the next step**
- **Don't forget that we are people**



it's about **YOU**

Thanks.....