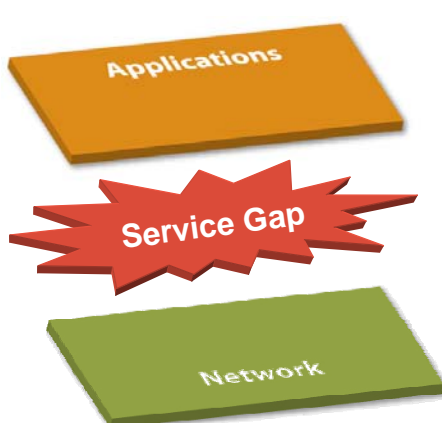




# Guaranteed Application Delivery




## Rigid Networks Can't Support Advanced Applications



### Business at Risk

- Critical applications unavailable or fail to perform
- Complaints from end users, low productivity
- Increased bandwidth demand & costs
- Distributed IT systems result in increased costs & complexity

2



**Packeteer**  
The Intelligent Overlay



**Guaranteed Application Delivery**

*Every application  
Every location*

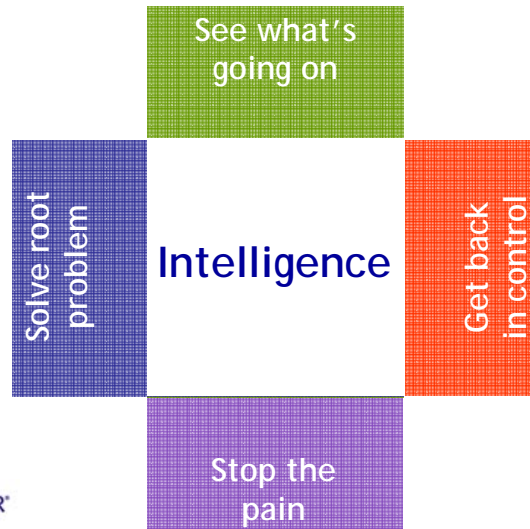
- Protect & optimize key business applications over the WAN
- Consolidate to lower costs & simplify management
- Extend storage & application services to the branch

3



[www.packeteer.com](http://www.packeteer.com)

**The Packeteer Difference**



## One Partner to Manage the Challenge

Centralized Management  
PolicyCenter and ReportCenter

Visibility  
Discovery  
Monitoring

Control  
App Shaping  
QOS Provisioning

WAN  
Optimization  
Data Compression  
Acceleration

WAFS  
& IT Services  
Server & Storage Consol  
Branch Office in a Box

Appliance Delivery  
128 kbps to 1 Gbps



Software Delivery  
Client, Server, Embedded



5



www.packeteer.com

## Packeteer Overview

- Founding technology innovators in both WAN Optimization and WAFS. 10+ years leadership.
- Market Leader - #1 Gartner, #1 IDC, #1 Infonetics
- Proven effectiveness with hundreds of business-critical applications
- Over 50,000 units shipped to over 7,500 customers
- 700+ sales partners in 50+ countries
- 24x7 global support
  - Cupertino, Netherlands, Sydney, Tokyo, Hong Kong, Kuala Lumpur
- Partnerships
  - Brocade, Microsoft, IBM Global Services, HP Services, CSC, Equant, Avaya, France Telecom, NTT, Telecom New Zealand, Samsung, Citrix, Extreme Networks, Polycom, Concord, BMC
- Dozens of product awards worldwide



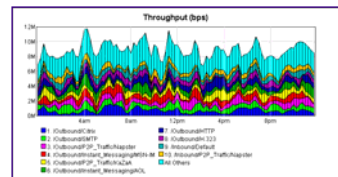
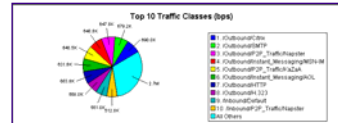
6



www.packeteer.com

## Visibility: Discovery & Monitoring What's on the Network

- Key Features
  - Unique deep application classification of network traffic
  - Real time monitoring of key network & application statistics
  - Performance reporting & automated alarming
- Problems solved
  - Discover all applications on the network
  - Track application utilization, measure user experience & SLAs
  - Identify issues & select the right tools to fix



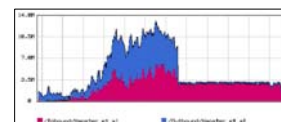
7



www.packeteer.com

## Control: QOS Beyond Queuing and Port-based Marking

- Key Features
  - Application-specific QOS for all application types (TCP, UDP)
  - TCP Rate Control manages remote traffic from a single point
  - QOS Provisioning: Aggregate, Per session and sub application
- Problems solved
  - Apply business rules to wan traffic
  - Ensure availability and performance of key applications
  - Contain recreational and malicious traffic
  - Minimize network congestion & latency



8



www.packeteer.com

## Optimization: Compression & Acceleration

- Key Features
  - Advanced dictionary based data compression techniques
  - Disk-based & RAM-based dictionaries for proper fit to environment
  - Transport acceleration (TCP, Layer 3/4)
  - Application-specific acceleration: CIFS, Web, Exchange (Layer 7)
- Problems solved
  - Accelerate performance of key applications
  - Increase capacity & utilization of links
  - Eliminate the impact of latency on chatty protocols
  - Allow for centralized application delivery architectures



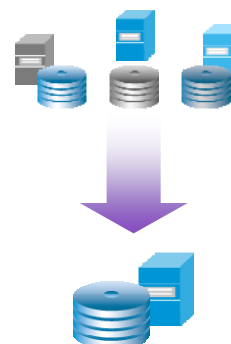
9



www.packeteer.com

## WAFS & IT Services Server/Storage Consolidation & Branch Office in a Box

- Key Features
  - Wide area file services (WAFS)
  - Remote office IT services: SMS, Domain Controller, Print, DNS/DHCP
  - File & data integrity management
  - Single instance virtual storage cache
- Problems solved
  - Enable real-time file collaboration, deliver centralized storage and data to branch locations
  - Control data growth & distributed storage costs through consolidation without performance or security compromise
  - Consolidate & deliver key IT services at branch location in a single device
  - Provides single instance of corporate data for compliance, integrity & control



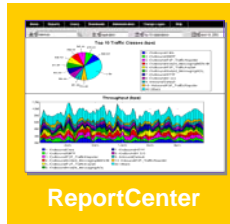
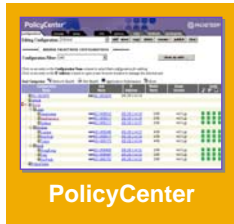
10



www.packeteer.com

## Centralized Management: Solutions & Integration

- Centralized analysis and reporting: collection, storage, analysis, report distribution
- Centralized policy management and device administration
  - Tiered Group Policies lowers TCO in large environments
- Rich APIs and alerts
- Leading Network Management System vendor integration



ReportCenter provides deep insight to many PacketShapers

PolicyCenter simplifies deployment, configuration and response

Adaptive Response can identify and respond automatically

11



[www.packeteer.com](http://www.packeteer.com)

## iShared Typical WAFS / CIFS / MS Application Improvement Ranges

Requirement	Protocol/Application	Typical Improvement over WAN access
File Sharing	CIFS (Windows)	9-357X
	NFS (UNIX)	20-34X
	MS Exchange (Email)	9-52X
TCP Protocols	HTTP	8-10X
	FTP	3-40X
	MS SharePoint	4-25X
Bandwidth Reduction	CIFS	88-98%
	NFS	89-99%
	MS Exchange	90-99%
IT Services	DNS, DHCP, Print, Domain Controller, SMS	Local Server for each function integrated natively into appliance

12



[www.packeteer.com](http://www.packeteer.com)

## PacketShaper Typical Application Improvement Ranges



Key Applications	Results
Transaction Applications	Shortened Delay 75%
Voice & Collaborative Video	Quality of Services Increased 60% (Jitter, Latency, Loss)
WAN Capacity	Increased 300%
Business Web Applications	Reduced Response Time 50%
Payback / IRR	6 Months / 185%

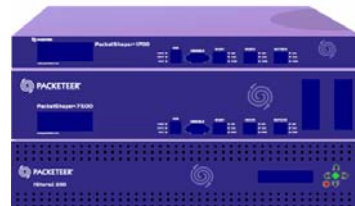
13



[www.packeteer.com](http://www.packeteer.com)

## Packeteer System

- Key features
  - Best of breed technologies
  - Flexible deployment: single box deployment, modular software, stepped evolution
  - Multiple delivery options: appliance, client or server software options
  - Centrally managed from remote consoles
- Problems solved:
  - Transparent & integrated to existing infrastructure
  - Adapt infrastructure to changing needs and new application issues
  - Apply specific technologies to meet needs of each location & changing needs over time



14



[www.packeteer.com](http://www.packeteer.com)

# Packeteer

## Great User Experience for Every Application at Every Location



- Ensure availability of critical applications
- Increase application performance & employee productivity
- Consolidate IT resources for compliance & cost efficiencies
- Decrease risk and ensure the payoff of IT investments



[www.packeteer.com](http://www.packeteer.com)



Fast WAN. Fast Apps. Fast Business.

Thank you.

