

# MPLS Solutions

April 17, 2008

Ed Hashek

VP Network Services

Product Manager



# Corporate Overview



# World Class Organization Offering Significant Scale

- Relationships with 8,200 financial institutions, including 48 of the top 50
- Commitment to investment - \$109 million in 2006 capital expenditures (7.5% of revenue)
- Leading provider of check image technology to large bank segment
- Over 4,000 endpoints in Endpoint Exchange Network
- Process over \$1.7 trillion in annual payment receivables
- Process over \$1.3 trillion ACH wire transfers annually
- Leading debit card processor with 74 million cards
- NYCE nationwide EFT/PIN-debit network of 280,000 ATMs, and 1.5 million POS locations

## Financial



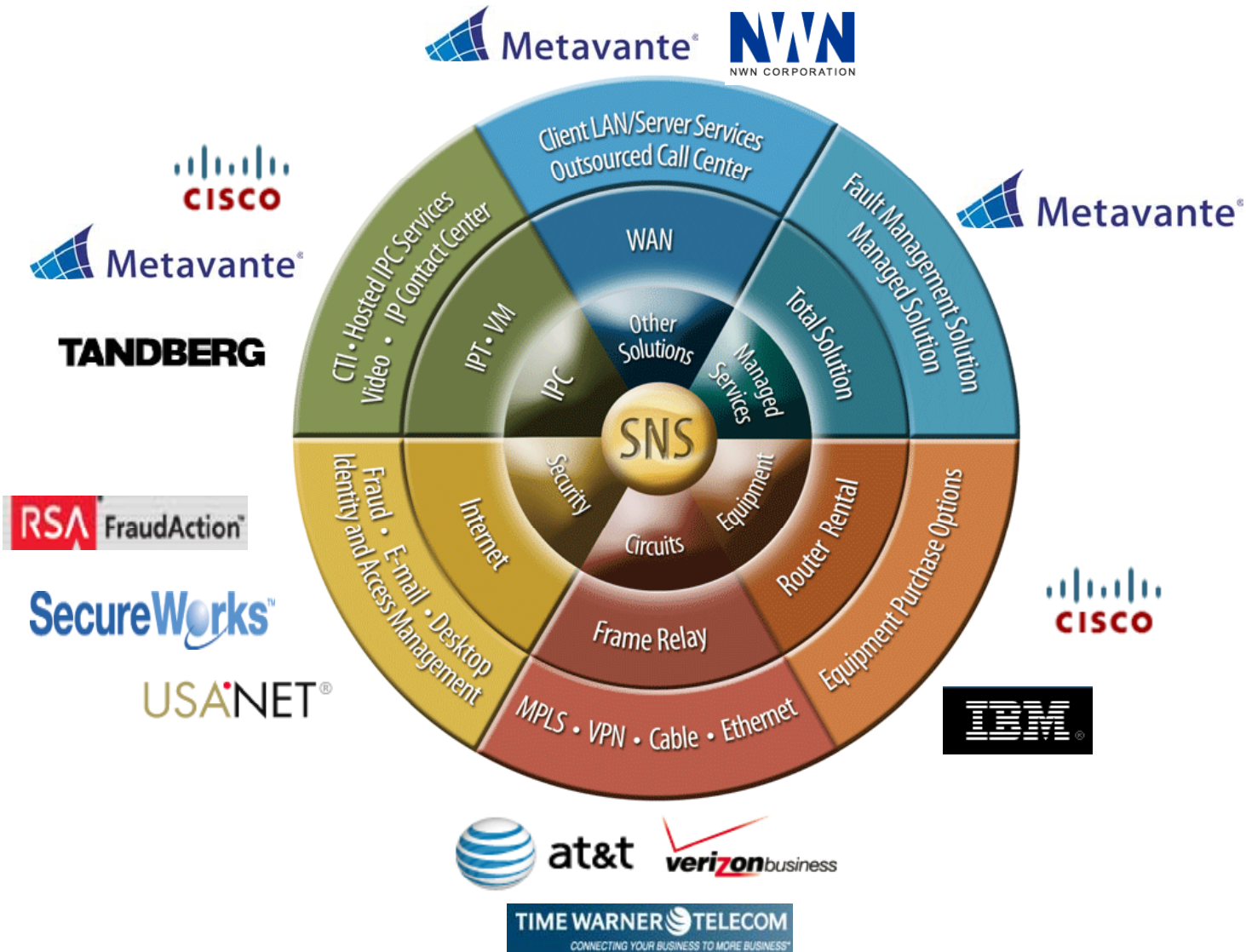
## Payments



# Metavante as a Service Provider Network Services



# Metavante Managed Infrastructure Solutions (SNS)

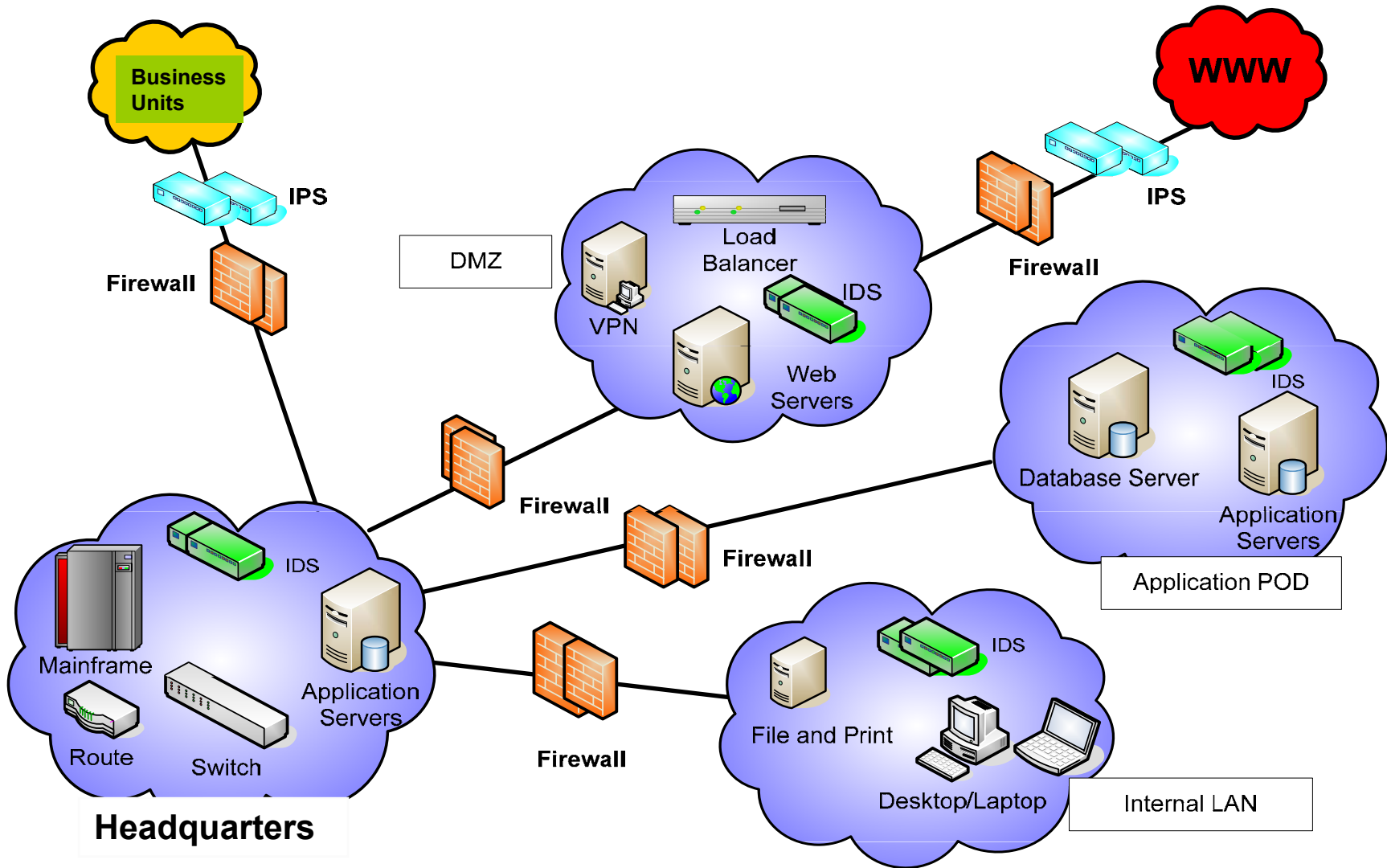


# Metavante Corporation

## Enterprise Network Management



# Metavante Enterprise Network Architecture



# Metavante Enterprise – Layer 2 VPLS Example

## Business Situation

- A MV Business Unit provides ASP services for about 300 organizations that performs flex spending (HSA, FSA, etc.) administrative functions.
- Business Unit located in Andover, MA.
- MV Business Unit required a D/R high speed connection to a D/R facility that was cost effective.
- MV designated D/R site is located in Oak Creek, Wisconsin

## Solution

- Implement CA-XOsoft (WANSsync) product to replicate all transactions for a high availability disaster recovery solution.
- Selected a high speed, large bandwidth Ethernet connection between Andover, MA and Oak Creek, WI because of cost, availability, and reliability.
- 100 mg Verizon VPLS circuit was installed in 4Q07.



# Questions & Answers

