

The Cisco WebEx Node for the Cisco ASR 1000 Series Delivers the Best Aspects of On-Premises and On-Demand Web Conferencing

Executive Summary

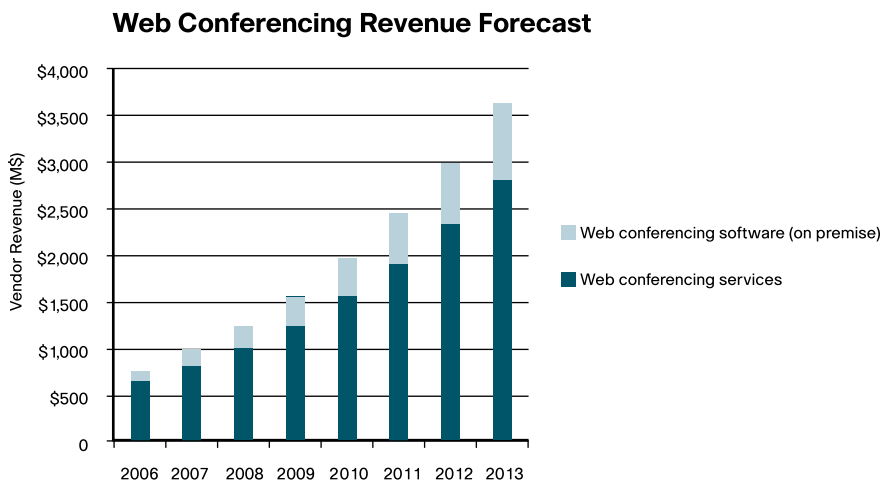
The Cisco WebEx™ Node for the Cisco® ASR 1000 Series, a shared port adapter for the Cisco ASR 1000, can help large enterprises reduce WebEx WAN bandwidth usage by up to 80 percent. The adapter is easy to install and functions transparently as a part of the WebEx Collaboration Cloud. This results in reduced WAN costs and reduced firewall/proxy load.

Introduction

The Case for Web Conferencing

In 2009, web conferencing is widely used by businesses of all sizes. The technology is mature and easy to use, requiring little more than a web browser or desktop client. Organizations now recognize the compelling value of interacting any time and any place with peers, customers, and partners. Web conferencing features include the ability to electronically share documents, presentations, and desktops to enable group viewing and editing. Voice and video conferencing, instant messaging, and business software integration are some of the more recent features offered by web conferencing software and services. (See Figure 1.)

Figure 1. Frost and Sullivan Web Conferencing Forecast



When businesses are under pressure to trim their operating expenses, web collaboration can be used as a substitute for travel and still maintain a high level of productivity for widely dispersed teams or campuses. Companies looking to reduce their carbon footprint also benefit from advanced web collaboration.

According to Frost and Sullivan's July 2008 World Web Conferencing Services Forecast, the web collaboration market is expected to grow at 22.5 percent CAGR through 2013. Cisco's WebEx Service leads in market share at 52 percent.

Cisco WebEx Web Conferencing

Cisco WebEx Meeting Applications deliver web conferencing through software as a service (SaaS), meaning hardware and software are hosted by Cisco through the Cisco WebEx Collaboration Cloud and delivered to end users on demand through a web browser. The SaaS model delivers many benefits, including rapid deployment and

global scaling, low cost of overhead and maintenance, and immediate access to the most up-to-date features and capabilities.

A tradeoff to these benefits is that enterprise WAN bandwidth requirements are increased, especially in a large campus environment with wide-scale adoption of web conferencing. While the WAN bandwidth expense is outweighed by the IT department savings of SaaS, reducing those demands can lead to significant enhancements in web conferencing performance and allow that bandwidth to be used for other mission-critical business applications.

Business Case for the Optimum Web Conferencing Solution: Optimizing WebEx SaaS Web Conferencing with a Simple Premises-Based Extension

A hybrid solution of WebEx hosted web conferencing with a premises-based solution promises to deliver the best of both worlds of on demand and on premises and to reduce WAN bandwidth costs and firewall load.

The Cisco WebEx Node for the ASR 1000 Series is designed to be such a hybrid solution. Technology details are explained below.

Internal Meetings: By the Numbers

As web conferencing has become a standard business communication means such as with instant messaging and phone conferencing, it inevitably means that many meetings will occur behind the corporate firewall. With a pure on-demand web conferencing service, these internal meetings will create sessions that traverse the firewall and add to WAN bandwidth requirements. A hybrid solution will eliminate the need for many of these meeting streams to cross the WAN and firewall boundary, but how much?

A good rule of thumb for very large enterprises is that 75% of meetings are internal while 25% are external. This indicates that many WebEx customers would benefit from the WebEx Node for the ASR 1000. However, each customer should assess their own WebEx meeting traffic patterns. In some cases, such as when WebEx is used heavily for training or events, meeting traffic can be biased toward external usage.

Hybrid Model: Hypothetical Business Case

Table 1 shows a hypothetical business case comparing a pure on-demand solution to a hybrid solution using the WebEx Node for the ASR 1000 Series. The business case assumes that the enterprise is using meeting, voice, and video capabilities of WebEx.

The business case assumes that a large enterprise with a significant campus location has about 2500 peak attendees with 75 percent of those attendees internal to the campus and behind the firewall. The ratio of external to internal attendees was determined by a Cisco WebEx analysis of meeting traffic.

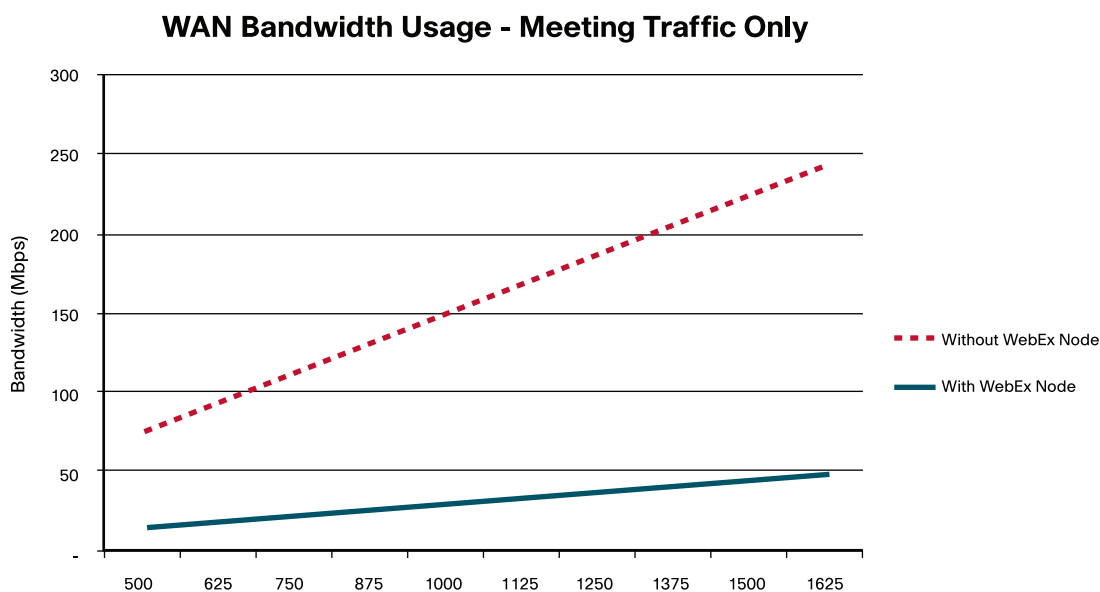
Table 1. Hypothetical Business Case

	Without WebEx Node	With WebEx Node
Meeting Assumptions		
Peak concurrent meetings	625	625
Peak attendees	2500	2500
Internal vs. External mix	75%	75%
Peak Internal Attendees	1875	1875
WAN Bandwidth Usage (MB)	225	82
WAN Bandwidth Reduction		64%
Cost Assumptions		
Required Quantity of WebEx Nodes		
Meeting	0	4
VoIP/Video	0	5
Price Per WebEx Node (K\$)	\$0.00	\$35.00
Total WebEx Node Price (K\$)	\$0.00	\$315.00
Total ASR 1000 Bill of Material (BOM)	\$0.00	\$182.00
Typical discount	\$0.00	50.00%
Total Estimated Capital Costs (K\$)	\$0.00	\$248.50
DS3s Required	5	2
Monthly DS3 Costs (K\$)	\$17.50	\$7.00
WAN Bandwidth Cost Reduction		60%
Payback (months)		23.7

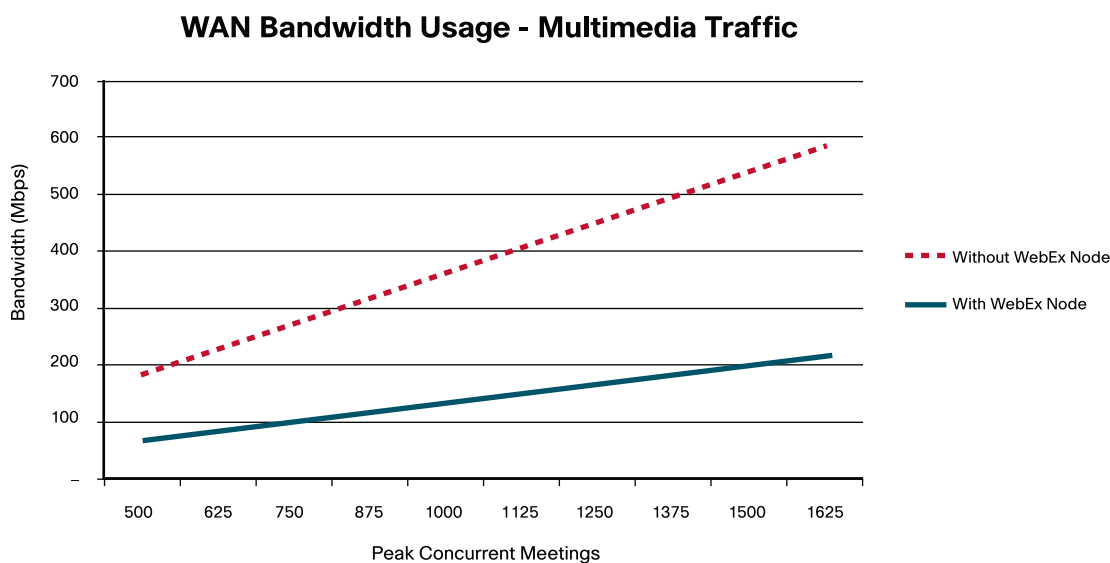
With the assumptions in Table 1, the WebEx Node for the ASR 1000 Series will reduce WAN bandwidth by 64 percent and WAN costs by 60 percent, and the payback period for the investment of \$248,500 of equipment would be 23.7 months.

If the enterprise plans to grow WebEx usage, the WebEx node for the ASR 1000 Series can also have a positive effect on bandwidth reduction.

In a scenario with traffic patterns similar to the case above except where only meeting traffic is generated (see Figure 2), the enterprise can grow usage to 1625 concurrent meetings and keep bandwidth usage below 50 Mbps, a savings of 81 percent over a purely on-demand solution.

Figure 2. WAN Bandwidth Usage – Meeting Traffic Only

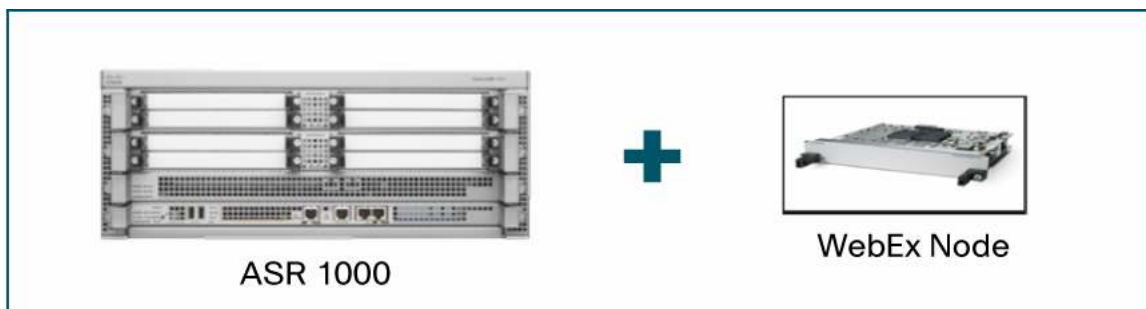
Alternatively, if the enterprise is growing and uses the voice, video, and meeting capabilities of WebEx, using the WebEx Node for the ASR 1000 Series can result in bandwidth savings of approximately 64 percent. At 1625 concurrent meetings an accelerated solution will generate a peak traffic load of about 211 Mbps vs. a non-accelerated load of about 585 Mbps. (See Figure 3.)

Figure 3. WAN Bandwidth Usage – Multimedia Traffic

A Hybrid Solution: The Cisco WebEx Node for the ASR 1000 Series plus WebEx Meeting Applications

WebEx Node for the ASR 1000 Series: What Is It?

The WebEx Node for the ASR 1000 Series is a shared port adapter (hardware module) for the ASR 1000 that integrates transparently with the Cisco WebEx Collaboration Cloud network. The adapter runs WebEx software that enables it to act like a private extension of the WebEx hosted service. It's like having a self-managing WebEx data center on campus. (See Figure 4.)

Figure 4. ASR 1000 Series plus WebEx Node

Software that runs on the WebEx Node for the ASR 1000 Series is based on proven WebEx Collaboration Cloud software components that are core to meeting collaboration and voice and video conferencing.

Architecturally, the WebEx Collaboration Cloud manages the adapter as just another part of the cloud whose capacity is dedicated to a private enterprise. Together, the WebEx Collaboration Cloud and the WebEx Node for the ASR 1000 Series form a high-performance distributed collaboration solution.

A secure connection between the module and the WebEx Collaboration Cloud is established using Secure Sockets Layer (SSL) encryption. All signaling collaboration data and multimedia information is hidden from the Internet using an SSL tunnel.

Collaboration server resources on the module, which are available only to the enterprise, are automatically managed and allocated by intelligence in the WebEx Collaboration Cloud. The same WebEx operational support system continues to help the enterprise manage its WebEx service, which includes the on-premises resources contained in the WebEx Node for the ASR 1000 Series.

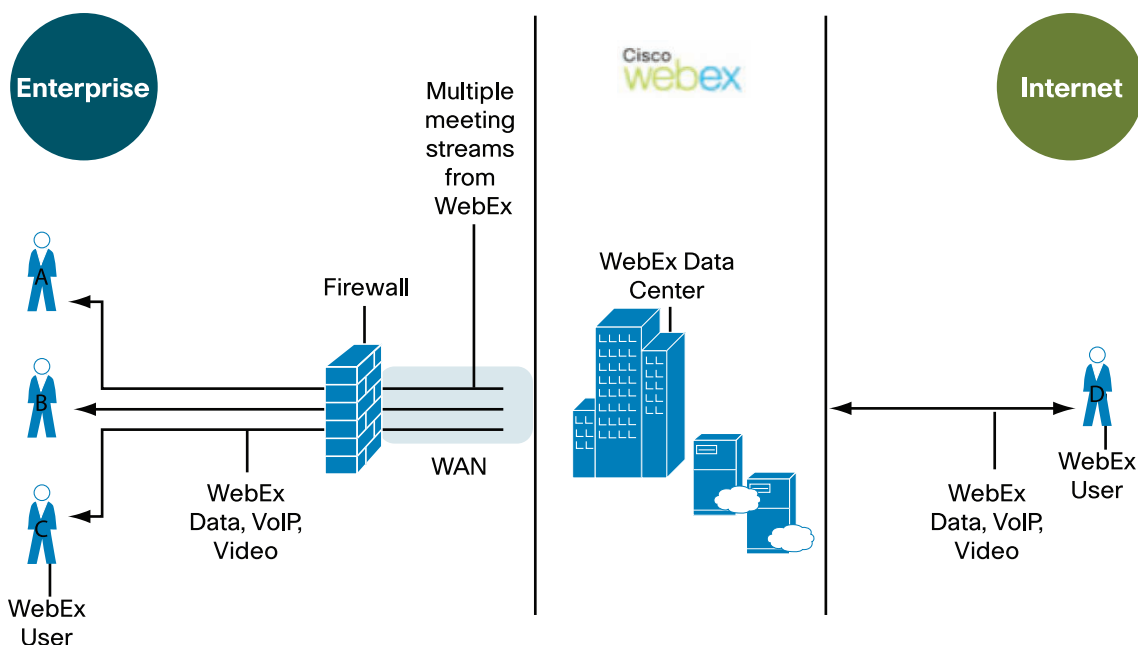
In addition, capacity is managed automatically. If the WebEx Node for the ASR 1000 Series reaches a capacity constraint, the WebEx meeting service will automatically overflow meeting participants to meeting zone resources on the network.

The ASR 1000 is an advanced Cisco services router designed specifically to handle services above and beyond its standard duties as a router. In a WAN gateway scenario, for example, the ASR 1000 can be deployed as a standard router but also a firewall with up to 20G of throughput. Cisco ASR 1000 Series routers offer service providers and enterprises industry-leading performance, service capabilities, reliability, and efficiencies in a compact form factor. Using the innovative Cisco QuantumFlow processor, current and future services can be instantly turned on to operate at line rate without compromising network performance or availability.

Cisco WebEx Node for the ASR 1000 Series: How Does It Work?

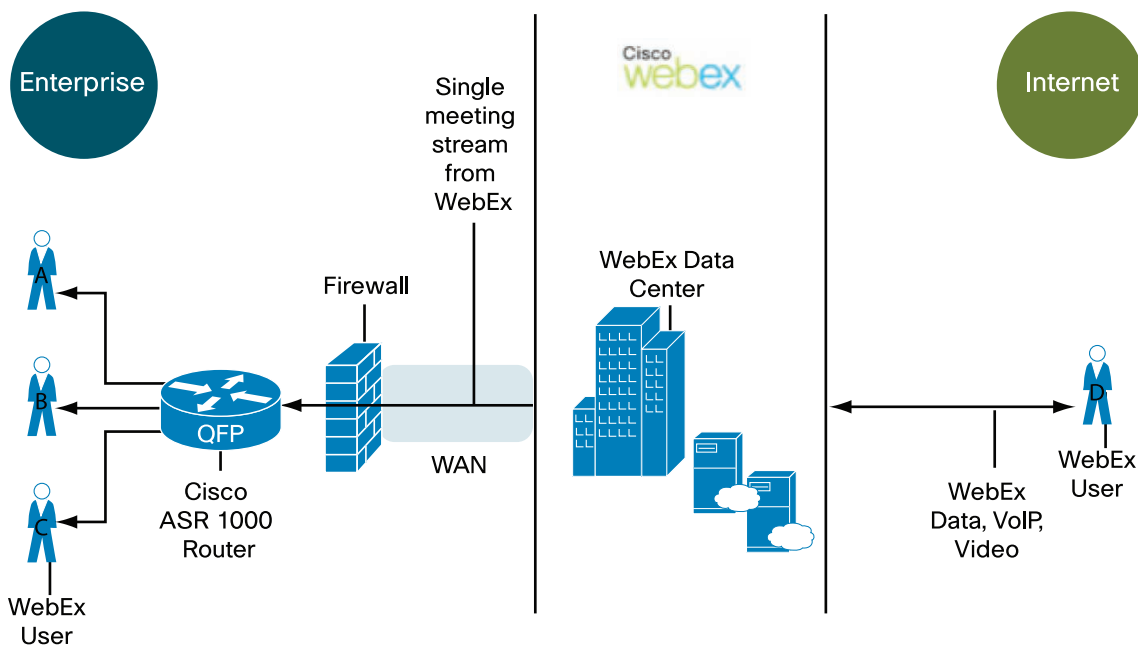
Without a WebEx Node for the ASR 1000 Series, all meeting connections from WebEx clients connect with the WebZone in the WebEx Collaboration Cloud, which resides in a WebEx data center. This means that for a large enterprise, there may be many connections traversing the firewall and utilizing WAN bandwidth. In our business case above we assumed that there were 1980 maximum peak attendees. A simplified diagram of this scenario is shown in Figure 5, with three on-premises meeting participants for illustration purposes.

Figure 5. Scenario Without WebEx Node for the ASR 1000 Series



When the WebEx Node and the ASR 1000 are installed on premises in the enterprise, internal meeting participants can join the meeting zone (or collaboration server) that resides on enterprise side of the WAN demarcation point inside the firewall. This reduces WAN bandwidth and load on the corporate firewall. See Figure 6.

Figure 6. Scenario with WebEx Node for the ASR 1000 Series



As you can see in Figure 6, internal meeting attendees' collaboration data is switched on site and therefore does not cross the firewall. Meeting participants from the outside are switched through the WebEx data center and connected to the meeting using secure SSL connections.

Conclusion

The Cisco ASR 1000; WebEx Node; and hybrid on-premises, on-demand architecture deliver an optimized solution for midsized to large enterprises and provides:

- The highest level of performance for all attendees
 - Attendees connect to the closest node on site or off site
 - Heavy lifting (meeting zone) is done as close as to the attendee as possible
 - Lowest possible latency
- Global coverage
 - The WebEx Collaboration Cloud on-demand platform is used for attendees outside the firewall
- Expensive control, administration, and enhanced services remain in the WebEx Collaboration Cloud hosted platform
 - Billing and reporting
 - Recording
 - Monitoring
- Low customer deployment and maintenance costs
 - No dedicated servers or appliances
 - No configuration
 - No admin or maintenance overhead for the enterprise
 - Service operates transparently

Additional Resources

Cisco WebEx

<http://www.WebEx.com/>

WebEx Meeting Applications: Enterprise Grade Performance

<http://www.webex.com/enterprise/web-meeting-applications/enterprise-grade-performance.html>

ASR 1000 Product Information

<http://www.cisco.com/en/US/products/ps9343/index.html>



Americas Headquarters
Cisco Systems, Inc.
San Jose, CA

Asia Pacific Headquarters
Cisco Systems (USA) Pte. Ltd.
Singapore

Europe Headquarters
Cisco Systems International BV
Amsterdam, The Netherlands

Cisco has more than 200 offices worldwide. Addresses, phone numbers, and fax numbers are listed on the Cisco Website at www.cisco.com/go/offices.

CCDE, CCSI, CCENT, Cisco Eos, Cisco HealthPresence, the Cisco logo, Cisco Lumin, Cisco Nexus, Cisco Nurse Connect, Cisco Stackpower, Cisco StadiumVision, Cisco TelePresence, Cisco WebEx, DCE, and Welcome to the Human Network are trademarks; Changing the Way We Work, Live, Play, and Learn and Cisco Store are service marks; and Access Registrar, Aironet, AsyncOS, Bringing the Meeting To You, Catalyst, CCDA, CCDP, CCIE, CCIP, CCNA, CCNP, CCSP, CCVP, Cisco, the Cisco Certified Internetwork Expert logo, Cisco IOS, Cisco Press, Cisco Systems, Cisco Systems Capital, the Cisco Systems logo, Cisco Unity, Collaboration Without Limitation, EtherFast, EtherSwitch, Event Center, Fast Step, Follow Me Browsing, FormShare, GigaDrive, HomeLink, Internet Quotient, IOS, iPhone, iQuick Study, IronPort, the IronPort logo, LightStream, Linksys, MediaTone, MeetingPlace, MeetingPlace Chime Sound, MGX, Networkers, Networking Academy, Network Registrar, PCNow, PIX, PowerPanels, ProConnect, ScriptShare, SenderBase, SMARTnet, Spectrum Expert, StackWise, The Fastest Way to Increase Your Internet Quotient, TransPath, WebEx, and the WebEx logo are registered trademarks of Cisco Systems, Inc. and/or its affiliates in the United States and certain other countries.

All other trademarks mentioned in this document or website are the property of their respective owners. The use of the word partner does not imply a partnership relationship between Cisco and any other company. (0903R)